

TRUSTED AND  
PROFESSIONAL  
CAREGIVER SERVICES  
SINCE 2010



EMERGENCY NO.  
POLICE / FIRE / AMBULANCE

**000**

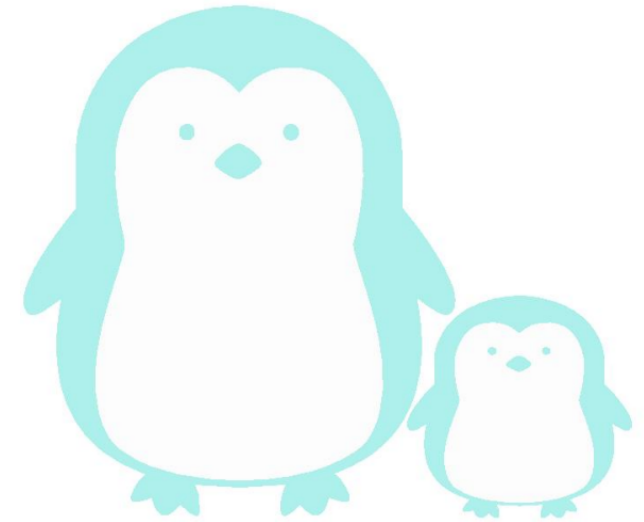
PSC CONTACT NO.

 03 8838 8976

 0438 68 66 99



CAREGIVER NAME:  
CAREGIVER PH NO.:  
HOMESTAY HOST PH NO.:



**CONTACT US**

[info@pscaustralia.com.au](mailto:info@pscaustralia.com.au)  
[www.pscaustralia.com.au](http://www.pscaustralia.com.au)

**WELCOME TO AUSTRALIA  
STUDENT SAFETY INFO**

**PROFESSIONAL  
STUDENT  
CARE**



## PERSONAL SAFETY



- Travel in groups, avoid travelling alone
- Aim to be home before dark, avoid going out at night
- Be aware of your surroundings
- If something doesn't feel right such as someone is following you, go to a place with people (such as a restaurant or supermarket)
- Be careful of personal belongings, always keep wallet, laptop and other valuables close to you
- When crossing roads, always watch out for cars and you must cross at traffic lights or specified crossings
- When crossing at traffic lights, only cross when the light is green, do not start crossing the road if the red light is flashing
- Do NOT walk through dark places such as parks at night
- Do NOT talk to strangers or follow them to other places



## PLACES TO AVOID

- Amusement parlours, internet cafes, gaming places, Karaoke bars, night clubs, and pubs
- Generally avoid dark places with no people around



## MONEY AND BANKING

- Do NOT carry too much cash when going out, try to only carry \$50
- Do NOT tell people how much money your parents send to you each month and how much you have in your bank account
- Do NOT lend money to or borrow money from other people
- Do NOT use your birthday as your bank card pin number as it is easy for people to find out



## TRAVELLING ON PUBLIC TRANSPORT



- When getting off a tram, look left and right to make sure the cars has stopped before stepping off
- Always purchase ticket before catching public transport and remember to validate your ticket where required to avoid being fined



- Check transport timetable in advance to avoid long waits especially check for last service for the day
- When on public transport, do not litter, put your feet on seats, use indecent language or force carriage doors as this may result in penalties



- International students must buy Full Fare tickets, not concession fares



- Do NOT ravel in empty carriages, sit in the first carriage behind the driver at night or outside peak times
- Do NOT wait for transport in empty or dark areas, wait in well lit areas with other people

## CATCHING A TAXI

Call a friend / your caregiver / your homestay host and speak in English telling them you have just gotten onto a taxi from where and should be home in how long



- Sit in the back seat
- Note the driver's number which is displayed on the dashboard

## FEELING SICK

- If you are feeling sick, tell your homestay host and caregiver and they will take you to see a doctor



If you are too sick to go to school, you must contact your school or your caregiver in the morning so the school can be notified

Your absence from class will count towards your

non-attendance even if you are sick, so remember to get a doctor's certificate to show the school when requested

## FIRE AND ELECTRICAL SAFETY AT HOME

- Do NOT leave cooking unattended and always keep pot handles turned in
- Avoid plugging too many adaptors to one power point at any one time
- Place your heaters at least one meter away from flammable items, such as your bed, desk or curtains

